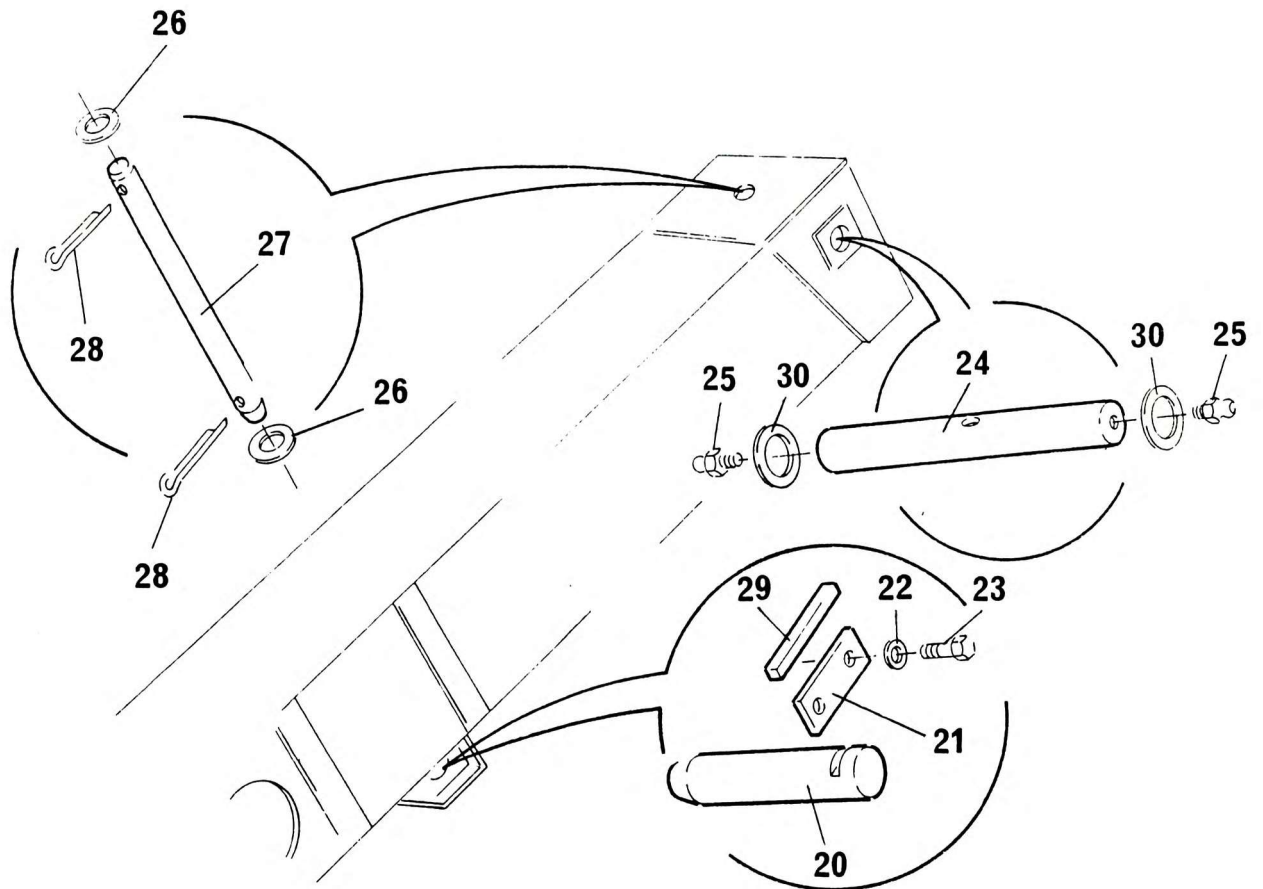


PIN ASSEMBLY PIVOT & LIFT CYLINDER UPPER



| NO. | PART NO.     | QTY. | DESCRIPTION                     | NO. | PART NO. | QTY. | DESCRIPTION |
|-----|--------------|------|---------------------------------|-----|----------|------|-------------|
| 20  | 8807271      | 1    | Upper Shaft - Lift Cylinder     |     |          |      |             |
| 21  | 6-705-993611 | 1    | Plate Keep                      |     |          |      |             |
| 22  | 7-949-000377 | 2    | Hardened Washer                 |     |          |      |             |
| 23  | 7045301      | 2    | Screw Hex Head<br>M10 x 30 Long |     |          |      |             |
| 24  | 6-810-990197 | 1    | Shaft Pivot                     |     |          |      |             |
| 25  | 7-440-000000 | 2    | Nipple Grease 1/8" NPT          |     |          |      |             |
| 26  | 4-159-900132 | 2    | M-Plate                         |     |          |      |             |
| 27  | 6-689-000676 | 1    | Pin Pivot Shaft                 |     |          |      |             |
| 28  | 7-690-102810 | 2    | Cotter Pin                      |     |          |      |             |
| 29  | 6-705-004551 | 1    | Shear Stop                      |     |          |      |             |
| 30  | 7-949-000385 | 4    | Thrust Washer                   |     |          |      |             |

6-689-990235  
Issue No. 05